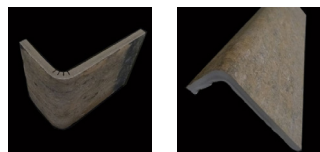
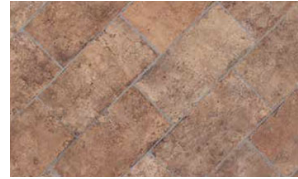
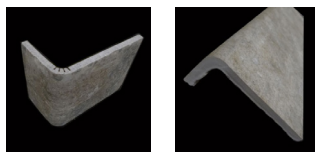


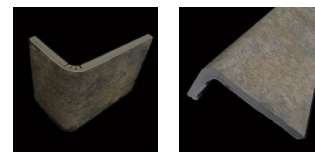
### Old Chicago (OLCH)



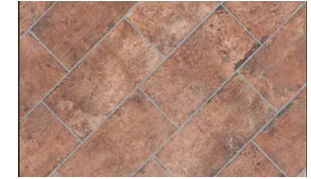
### South Side (SOSI)



### State Street (STST)



### Wrigley (WRIG)



### Field Tile\*

- 16x16 MED ##### CHICAFF16
- 8x8 MED ##### CHICAFF88
- 8x16 MED ##### CHICAFF86
- 4x8 MED ##### CHICAFF48
- 9x11 Hex MED ##### CHICAHE91

### Mosaic

- 3x3 MED ##### CHICAMO33

### City Mix\*\*

- 4x8 MED ##### CHICACM48

### (l) Corner

- 4x4 MED ##### CHICAOC44

### (r) Stair Tread

- 4x16 MED ##### CHICAST41

### Product Info:

- Also available in 3x16 Bullnose MED ##### CHICABN31
- PEI Rating = 5
- Frost Resistance = Y
- Check Decor 24 for stock



V4 - Extreme variation is inherent in this tile. All material must be inspected prior to installation. Absolutely no claims will be accepted after installation.

### Notes:

\*Field Tile comes in two styles - plain and stamped. Stamped pieces of tile all say "Chicago Brick." A random mix of plain and stamped pieces come in each box (although the majority of the tile in each box will be plain).

\*\*City Mix comes in 26 different designs. All tile in the City Mix Series is stamped with a city name. Designs (aka stamps) will be random per box.